

# Staybrite 300mm Single Wall Shelves

## Staybrite 300mm Single Wall Shelves



WS-1800S



WS-1200S

### Features & Benefits

- Top made from 1.2mm 304 Grade Stainless Steel
- 2 x 2mm stainless steel brackets with provision for hanging spoons & ladles, (3 brackets with WS-1800S, WS-2100S & WS-2400S)
- 50mm upstand
- Supplied flat packed ready for assembly and fitting
- Made in New Zealand
- Easy to clean & maintain

### About

The Staybrite wall shelves are manufactured in New Zealand from 1.2mm thick stainless steel in commercial grade 304 in a No. 4 finish. The shelves are 300mm wide and are available in 6 standard sizes. Custom lengths to suit your application can also be manufactured (consult Staybrite). They are of top quality & ideal for use in busy commercial kitchens, restaurants supermarkets, cafes and rest homes.

### Product Code

- WS-0600S - Wall Shelf 600x300x32mm
- WS-0900S - Wall Shelf 900x300x32mm
- WS-1200S - Wall Shelf 1200x300x32mm
- WS-1500S - Wall Shelf 1500x300x32mm
- WS-1800S - Wall Shelf 1800x300x32mm
- WS-2100S - Wall Shelf 2100x300x32mm
- WS-2400S - Wall Shelf 2400x300x32mm

### Specifying Guide

When specifying this product please include:  
**Product Name and Code. Product Dimensions**

### Options

Product length - available in: 600mm 900mm, 1200mm, 1500mm, 1800mm 2100mm & 2400mm standard lengths



**Auckland Branch:**  
13A Sultan St, Ellerslie  
Auckland 1051  
P: (09) 634 4557  
F: (09) 634 4537

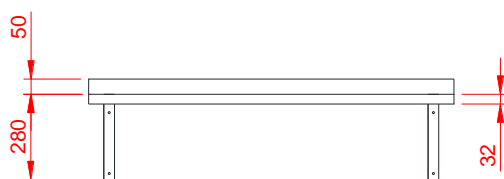
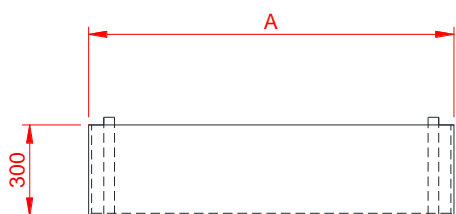
**Christchurch Branch:**  
44 Treffers Rd. Sockburn,  
Christchurch 8042  
P: (03) 348 0733  
F: (03) 348 9136

**Postal Address:**  
PO Box 11-292,  
Sockburn  
Christchurch 8443

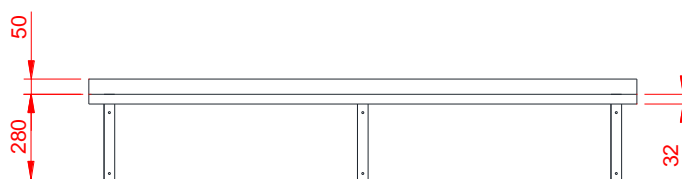
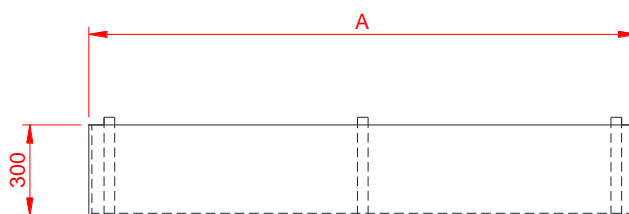
NZ Toll Free 0800 610 610 | e-mail: [sales@staybritestainless.co.nz](mailto:sales@staybritestainless.co.nz) | <http://www.staybritestainless.co.nz>

## Drawings

### Plan View / Elevation

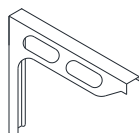


2 x Brackets for models WS-0600S, WS-0900S, WS-1200S & WS-1500S

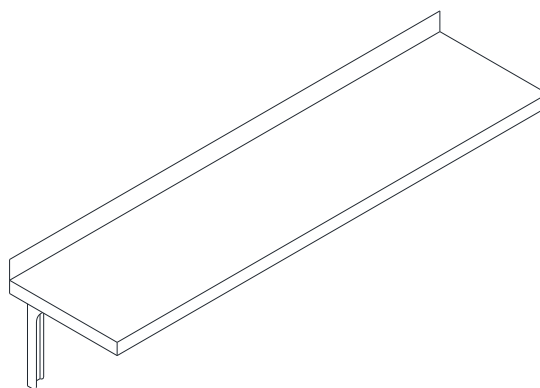


3 x Brackets for models WS-1800S, WS-2100S & WS-2400S

### Bracket Isometric



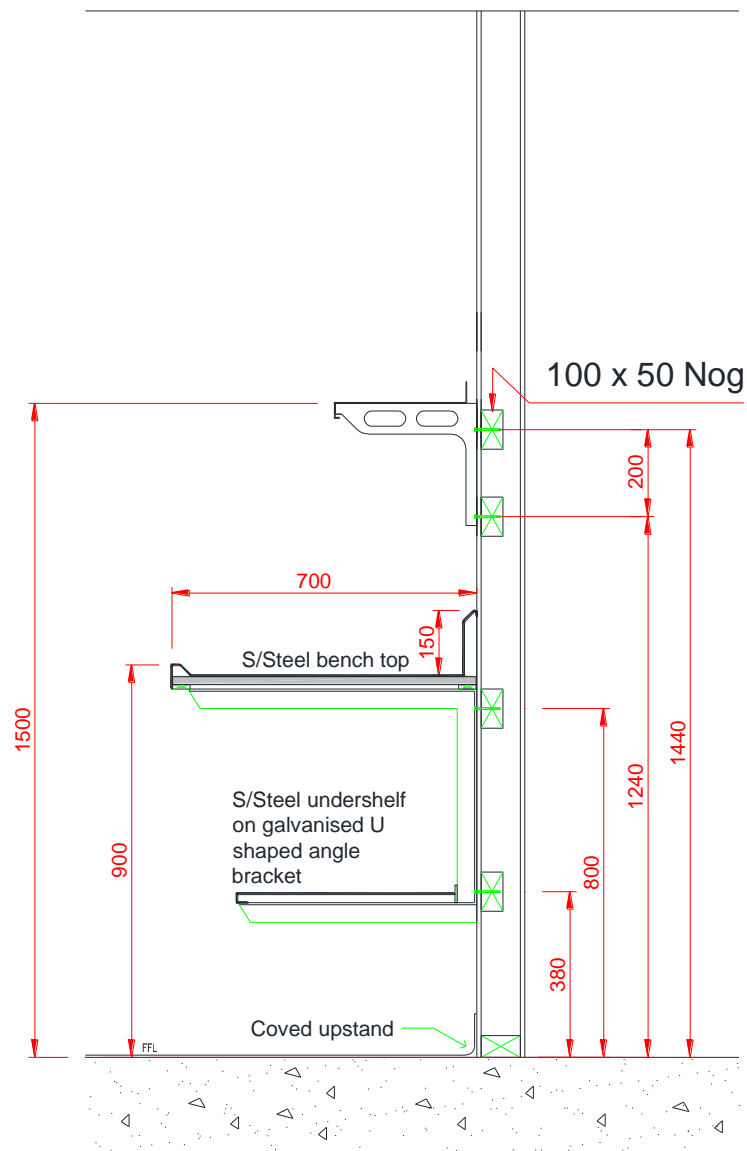
### Shelf Isometric



### STAYBRITE STAINLESS FABRICATORS

Due to ongoing research and our commitment to product development, details are subject to change without notice. Details accurate at time of print. Please refer to [www.staybritestainless.co.nz](http://www.staybritestainless.co.nz) for the most current product information. allow +/- 5mm tolerance for dimensions and setouts shown in product literature.

## Noggin Details



### Single Shelf Noggin details



## STAYBRITE STAINLESS FABRICATORS

Due to ongoing research and our commitment to product development, details are subject to change without notice. Details accurate at time of print. Please refer to [www.staybritestainless.co.nz](http://www.staybritestainless.co.nz) for the most current product information. allow +/- 5mm tolerance for dimensions and setouts shown in product literature.

NZ Toll Free 0800 610 610 | e-mail: [sales@staybritestainless.co.nz](mailto:sales@staybritestainless.co.nz) | <http://www.staybritestainless.co.nz>